

OLOTADIN-KT EYE DROPS

Olopatadine HCl & Ketorolac Tromethamine Ophthalmic Solution

"Powerful Allergy & Pain Relief. Dual Action Comfort for Eyes."

Marketed by: Human Opthocare

A Division of Human Biolife India Pvt. Ltd.

www.humanopthocare.com



Product Overview

Olotadin-KT Eye Drops

Active Ingredients:

- **Olopatadine HCl** → Potent antihistamine + mast cell stabilizer (long-lasting allergy relief)
- **Ketorolac Tromethamine** → Non-steroidal anti-inflammatory drug (NSAID) that relieves ocular pain & inflammation

Multi-action formulation:

Anti-allergic + Anti-inflammatory + Analgesic

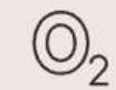
Specially designed for:

Allergic conjunctivitis, post-surgical pain & inflammation, seasonal eye allergies



Why Olotadin-KT?

Dual Mechanism of Action



Olopatadine

Blocks histamine H1 receptors + prevents mast cell degranulation



Ketorolac

Inhibits COX pathway → reduces prostaglandins → pain & inflammation control

✔ Advantage:

Immediate & sustained relief from itching, redness, watering & pain

Indications

💡 Olotadin-KT is recommended for:



Seasonal & perennial allergic conjunctivitis



Post-surgical ocular inflammation & pain
(cataract, refractive surgery)



Ocular itching, redness & watering
due to allergens (pollen, dust, pollution)



Patients intolerant to steroids but requiring anti-inflammatory therapy



Clinical Advantages

Key Benefits of Olotadin-KT:

- Rapid & long-lasting relief from ocular allergy symptoms
- Dual-action → Antihistamine + Anti-inflammatory
- Non-steroidal → No risk of steroid-induced complications
- Improves patient comfort & compliance
- Suitable for both acute allergy episodes & post-operative care

Comparison with Other Eye Drops

| Parameter | Olota [®] KT (Olopatadine + Ketorolac) | Olopatadine Alone | Ketorolac Alone |
|-------------------|---|----------------------|------------------------------|
| Antihistamine | ✔ Strong | ✔ Strong | ⊘ None |
| Anti-inflammatory | ✔ Strong (NSAID) | ⊘ None | ✔ Strong |
| Pain Relief | ✔ Yes | ⊘ No | ✔ Yes |
| Post-op Use | ✔ Excellent | ⚠ Limited | ✔ Good |
| Compliance | ✔ Single solution | ⚠ Needs add-on NSAID | ⚠ Needs add-on Antihistamine |

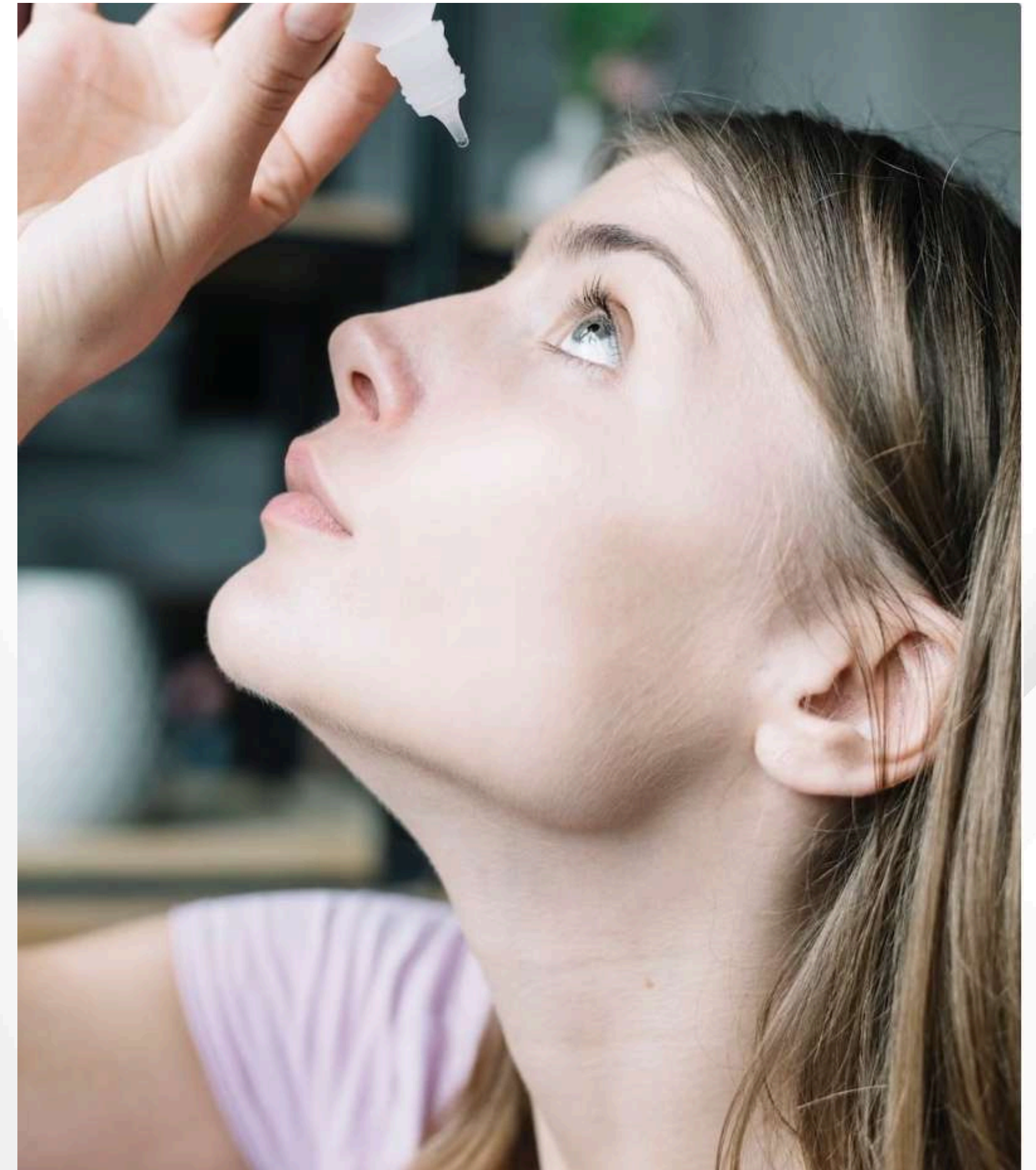
Dosage & Administration

Dosage:

1 drop into the affected eye(s), **2 times daily** or as directed by physician.

Important Instructions:

- For short-term or seasonal use as indicated.
- Remove contact lenses before use; reinsert after 15 minutes.
- For **topical ophthalmic use only**.



Safety & Tolerability

 Generally Well-Tolerated

Possible side effects:

Mild stinging/irritation

Temporary blurred vision

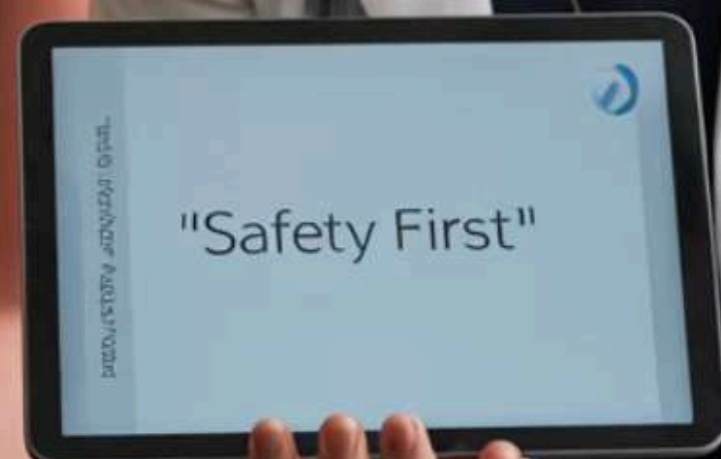
Rare: eye dryness or foreign
body sensation

Contraindications:

Hypersensitivity to any
component

History of NSAID-induced
asthma/bronchospasm

Avoid prolonged unsupervised
use



Why Prescribe Olotadin-KT?

 Doctor's Choice For:

Dual therapy → Allergy +
Inflammation + Pain relief

Ideal for allergic conjunctivitis &
post-surgical patients

Non-steroidal → Safe for long-
term use compared to steroids

High compliance with single drop therapy

Trusted HumAn Optocare formulation



HumAn
Opthocare™

Contact Us

Fluromac is a potent ophthalmic corticosteroid for targeted inflammation relief with a strong safety profile when used judiciously.

Use with clinical discretion, especially in high-risk ocular conditions.

For medical queries or collaboration:

HumAn Opthocare – A Division of Human Biolife India Pvt. Ltd.



www.humanopthocare.com



+91 6283361749

